

## TECHNICAL FEATURES



### Descriptio

The SL19 model is completely foldable, and allows you to place the traffic light inside the cart. Usable with Dual and MPB control unit.

### OPTICAL FEATURES

Light source	LED	
Optics	Single sided	
Colour	Green - Amber - Red	
Lamps diameter	3xBasic211 (standard version)	3xBasic201 (high visibility version)
Optic lifetime	> 50,000 hours	

### ELECTRICAL FEATURES

Power supply	12 Vdc (11 ÷ 15 Vdc)	
Power consumption	3 W	7.8 W
Insulation class	Class III	

### MECHANICAL FEATURES

Operating temperature	-10°C ÷ +55°C	
LED lamps IP protection Degree	IP65	
Cart IP protection Degree	IP54	
Weight	25 Kg (without battery)	
Dimensions (Open)	780 x 440 x 1880 mm	
Dimensions (Closed)	780 x 440 x 410 mm	
Adjustable height	1630/1755/1880 mm	
LED lamps materials	Polycarbonate (Lens); PA6 (Body)	
Cart material	Painted galvanized steel	

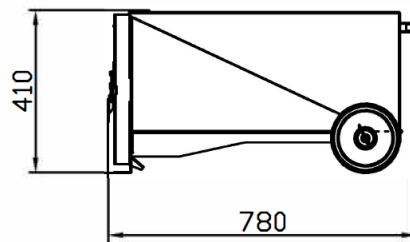
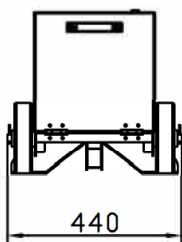
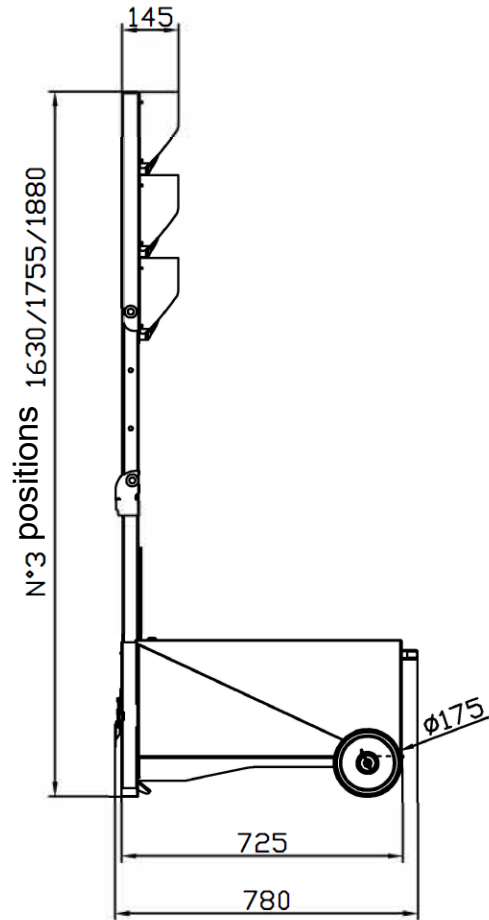
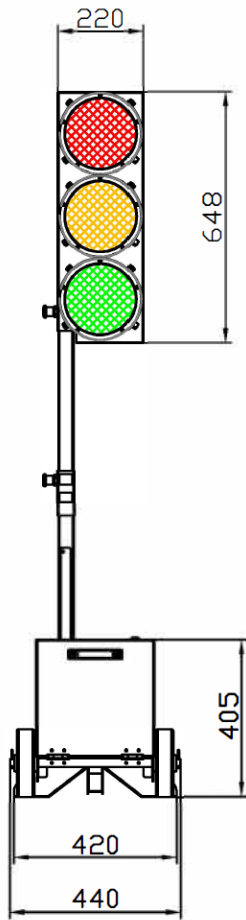


Rev. 1

29/09/2023

Approved TEC

Approved AQ



Rev. 1  
29/09/2023

Approved TEC

Approved AQ