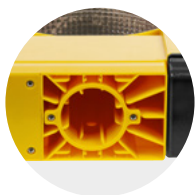


Radio sequence D1-Solar Hybrid

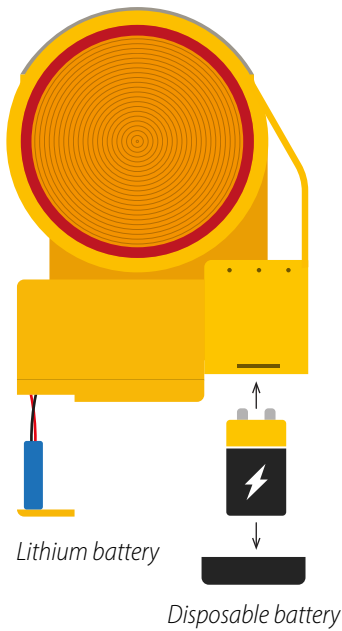


LED radio sequence with solar technology

Thanks to the contribution of solar panels, in optimal solar conditions, the autonomy of the radio lamp can triple the normal autonomy of the non-rechargeable battery.



Certification EN 12352	L8L
LED Colour	
Input voltage	6 V
Fixing	<ul style="list-style-type: none">• Pole for 60 mm• Pole for 48 mm• Panel white/red• Bracket



Quick Start mode

D1-Solar Hybrid L6 - L7

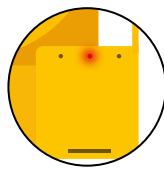
D1-Solar Hybrid

D1-Solar Hybrid Radio sequence

This is how the D1 Solar Hybrid L6 and L7 lamps work **with twilight function** (night only): yellow, red, single-sided and double-sided.

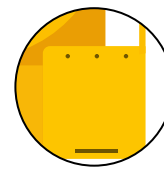
The lamp only needs a disposable battery to start if the built-in lithium battery is flat, after that it is completely autonomous and does not require further battery changes.

It does not need a disposable battery to operate, so we recommend the use of **flow amperage disposable batteries**.



LED ON

Disposable battery in operation

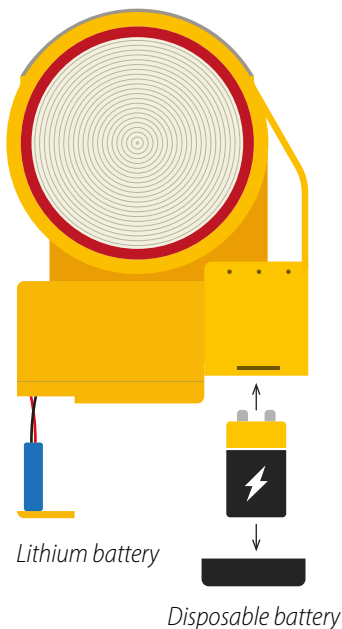


LED OFF

Lithium battery in operation

Disposable battery until exhaustion

Photovoltaic with lithium battery



Combo mode

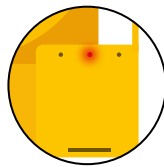
D1-Solar Hybrid FlashLED L8G - Radio L8L

D1-Solar Hybrid

D1-Solar Hybrid Radio sequence

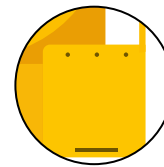
This is how the D1 Solar Hybrid L8G and Radio L8L lamps operate, **with day and night function** (single-sided only).

The lamp **works only if a disposable battery is also inserted**, the solar panel and the lithium battery are not sufficient to guarantee the functioning of the lamp but they help increasing the autonomy of the disposable battery, therefore the use of **disposable batteries with high amperage** is recommended.



LED ON

Disposable battery in operation



LED OFF

Lithium battery in operation

Disposable battery

Photovoltaic with lithium battery

Disposable battery

Photovoltaic with lithium battery